

Make Your Mark...



Nasc's Voter Awareness Campaign



Voter Information Leaflet

Why You Should Vote?

Immigrants are now over 10% of the Irish population. Collectively we have a significant voice.

Voting in elections is one way of letting public representatives know that you want your voice to be heard and that you want to contribute to Irish society as active residents and citizens.

Candidates who are looking for your votes will pay more attention to immigrant needs and concerns if they know that immigrants are voting.

Your voice can make a difference!

When Are the Next Elections?

In Summer 2009 there are 2 elections at the same time:

Local Elections & European Elections

Can I Vote?

Anyone living in Ireland - including Asylum Seekers - can vote in **Local Elections**. If you live in the city you elect a councillor for the city council. If you live in Cork county you elect for the county council.

To vote in the European Elections in Ireland you must be an EU citizen and give up your right to vote in EU elections in your own country. If you did not vote in a previous EU election in Ireland then you must also complete a **Form EP1**.

Only Irish citizens can vote in General Elections and in Presidential elections. A General Election is where you vote for the 166 TDs (Teachta Dáila/Members of Parliament) to the Irish Dáil or Parliament. Presidential elections to elect the president of the country are different from General Elections and are held every 7 years.

If the government want to change the constitution they must ask the people in a referendum. You must also be an Irish citizen to vote in a Referendum.

Your Voice Can



How Often Are Elections Held?

Local Elections: Every 5 years

General Elections: Every 5 years but sometimes governments can call or an election before the end of five years

European Elections: Every 5 years

Presidential Elections: Every 7 years

How Can I Register to Vote?

To get on the **Register of Electors** you must complete a form called the 'Application for Entry of Names in the Register of Electors'. This is available from your local authority. In Cork this is the City Council or the County Council. You can also get this form at Nasc. Shortly before the election you will be sent a polling card to the address at which you are registered which will tell you where you will vote and any information/identification you will need on the day.

Local Government Authorities Have Power Over:

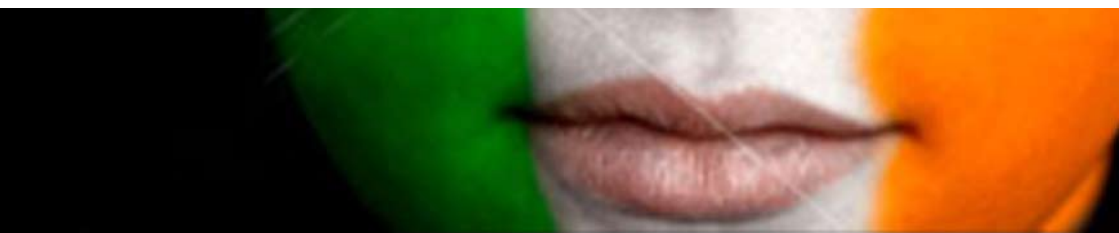
- Housing
- Planning
- Roads
- Water Supply and Sewerage
- Development Incentives and Controls
- Environmental Protection including rivers, lakes, air and noise
- Recreation Facilities and Amenities
- Agriculture, Education, Health and Welfare

Political Parties

The following parties are represented in either Cork City or County Council:

- Fianna Fail
- Fine Gael
- Green Party
- Labour
- Progressive Democrats
- Sinn Féin
- Socialist Party

Make A Difference



Check the Register

If you have previously voted in an election in Ireland you can visit www.checktheregister.ie to check your details. If you have changed address since the last time you voted you will need to complete a Form RFA3.

Pre-Election Plans

Nasc is planning a number of initiatives to coincide with the Local and European Elections in 2009.

A toolkit will be produced which will address various aspects of the campaign. This will include: questions you can ask politicians, how to register to vote and an explanation of the Irish local government system.

Nasc will also be seeking the input of city and county councilors in support of the campaign. This may include individual parties meeting with migrants to explain their respective political party's position on a range of issues of importance for migrants.

"Those who stay away from the election think that one vote will do no good. 'Tis but one step more to think one vote will do no harm."

Ralph Waldo Emerson

**Final Register Deadline:
November 25th**

**Supplementary Register
Deadline: 14 Days prior to
polling day.**

Contacts

Franchise Department,
Cork City Council,
City Hall,
Cork.
Phone: 021 4924107

Franchise Department,
Cork County Council,
County Hall,
Cork.
Phone: 021 4285266

Nasc,
35 Mary Street,
Cork.
Phone: 021 4317411



nasc
The Irish Immigrant Support Centre

